

POWERHOUSE™ HTD®

TIMING PULLEYS

8 mm Pitch

For 50 mm Wide Belts

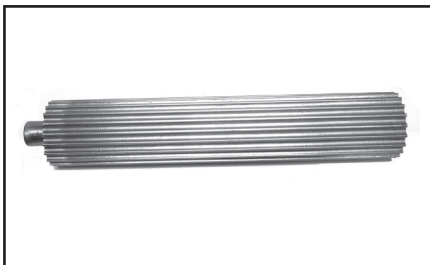
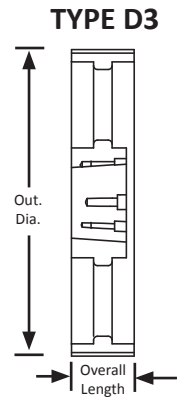
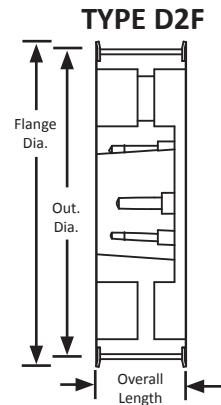
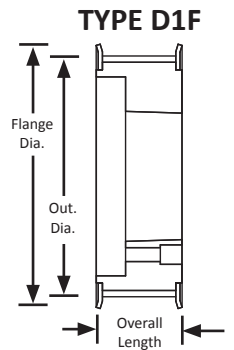
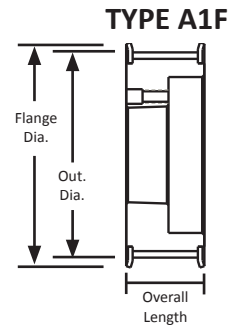
Steel/Iron

Black Oxide Plating

QD® Style



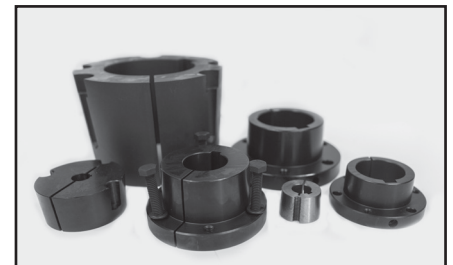
Part Number	No. of Teeth	Type	Pitch Dia. (in)	Out. Dia. (in)	Flange Dia. (in)	Bore / Bushing	Face Width (in)	Overall Length (in)
QD28-8M-50	28	D1F	2.807	2.759	3.150	JA	2.375	2.375
QD30-8M-50	30	D1F	3.008	2.958	3.346	JA	2.375	2.375
QD32-8M-50	32	A1F	3.208	3.156	3.543	H	2.375	2.375
QD34-8M-50	34	A1F	3.409	3.355	3.819	SH	2.375	2.375
QD36-8M-50	36	A1F	3.609	3.555	3.937	SH	2.375	2.375
QD38-8M-50	38	A1F	3.810	3.756	4.134	SH	2.375	2.375
QD40-8M-50	40	A1F	4.010	3.956	4.331	SH	2.375	2.375
QD44-8M-50	44	A1F	4.411	4.357	4.764	SD	2.375	2.375
QD48-8M-50	48	A1F	4.812	4.758	5.157	SD	2.375	2.375
QD56-8M-50	56	D1F	5.614	5.560	5.945	SK	2.375	2.375
QD64-8M-50	64	D1F	6.416	6.362	6.772	SK	2.375	2.375
QD72-8M-50	72	D1F	7.218	7.164	7.598	SK	2.375	2.375
QD80-8M-50	80	D2F	8.020	7.966	8.386	SF	2.375	2.375
QD90-8M-50	90	D2F	9.023	8.969	-	SF	2.375	2.375
QD112-8M-50	112	D3	11.229	11.175	-	SF	2.375	2.375
QD144-8M-50	144	D3	14.437	14.383	-	E	2.375	2.375
QD192-8M-50	192	D3	19.249	19.195	-	E	2.375	2.375



For 8 mm POWERHOUSE™ HTD® pitch pulley stock and flanges, see page 304.



For matching 8 mm POWERHOUSE™ HTD® pitch belts, see page 238.



For matching QD® bushings, see page 328.